



Nothing is gained, nothing is lost. Everything transforms

TURN YOUR PHONE



THIS MESSAGE AND THE DOCUMENTS THAT, WHERE APPROPRIATE, ARE ATTACHED, **ARE ADDRESSED EXCLUSIVELY TO ITS RECIPIENT(S) AND MAY CONTAIN PRIVILEGED OR CONFIDENTIAL INFORMATION.** ACCESS TO THIS INFORMATION BY PERSONS OTHER THAN THOSE DESIGNATED IS NOT AUTHORIZED. **COMMERCIAL USE OR DISTRIBUTION IS PROHIBITED.** OWNERSHIP OF THE TRADEMARKS **VERSTÄRSSPORTS** AND **VERSTÄRCARE.**





MEET & GREET

DISCOVER THE PERFORMANCE TEAM

NUTRITION AREA



PhD Jose Balmaseda

PREVENTION & TRAINING PHYSIOTHERAPY & REHABILITATION AREA



PhD Arkaitz Castañeda

PSYCHOLOGY AREA



PhD Patxi León

DOCTORS DIRECTORS

STRATEGY AND GLOBAL SUPERVISION

SENIORS SPECIALISTS

STRATEGY AND OPERATIONAL SUPERVISION



Miguel Agüero



Julia Sanchez



Antonin Suilen

JUNIORS

OPERACIONAL AND CONTROL



INTEGRATION

INTEGRATE THE VERSTÄRCARE UNIVERSE



SUBSCRIBE
PLAN



SIGN
CONTRACT



ACTIVE
PROGRAM

PROGRAMS

THE BEGINNING OF A PROMISING CAREER



IRISPROGRAM STARTER

PRICE: 120€ / MONTH
WITH 1 YEAR SUBSCRIPTION PERMANENCY

START NOW



Forms & KYC Healthcare



Private platform access & Secure Data



Nutritional, Training, Psychology, Prevention & Rehabilitation
monthly personal programming



Human support with the Junior dedicated team on the chat



1 hour of personalized video sessions per quarter, for every area



Track progress



PROPROGRAM ADVANCED

PRICE: 360€ / MONTH
WITH 1 YEAR SUBSCRIPTION PERMANENCY

START NOW

BOOK A MEETING

PROGRAMS

ELEVATE YOURSELF TO PROFESSIONAL LEVELS



Forms & KYC Healthcare



Private platform access & Secure Data



PRO Analysis Testings with our High Performance Clinic & Recommendations (see page 10)



Nutritional, Training, Psychology, Prevention & Rehabilitation weekly personalized programming



Weekly human support & advice with the Juniors and Seniors team on the chat



2 hours of personalized video sessions per month for every area



Personalized Track progress & Monitoring (weekly data analysis with all Apps integrated and Personal Coaches)

PROGRAMS

DOMINATE THE GAME AT THE HIGHEST LEVEL



ELITEPROGRAM EXPERT

PRICE: 1.500€ / MONTH
WITH 1 YEAR SUBSCRIPTION PERMANENCY

START NOW

BOOK A MEETING



Forms & KYC Healthcare



Private platform access & Secure Data



ELITE Analysis Testings with our High Performance Clinic & Evolution Control (see page 10)



Nutritional & Supplementation, Training, Psychology, Prevention & Rehabilitation daily personalized programming with document support review



Daily human support with the Seniors & Doctors Directors team on the chat



4 hours of personalized video sessions for every area & 6 hours of specific training per month



Personalized Track progress & Monitoring (daily data analysis with all Apps integrated and Personal Coaches)



Promotion & Sponsoring

HIGH PERFORMANCE CLINICS

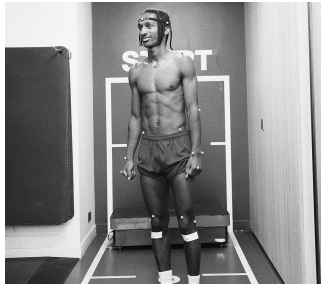
TRANSFORMING THE GAME

PRO ANALYSIS TESTINGS

IDEAL FOR YOUTH AND PROFESSIONAL ATHLETES

01 Morphology

+ 1 test



02 Posture, CORE, Flexibility, Mobility

+ 3 tests

03 Strength and Power

+ 2 tests

04 Resistance

+ 1 test

ELITE ANALYSIS TESTINGS

IDEAL FOR INTERNATIONAL ELITE ATHLETES

01 Morphology

+ 2 tests



02 Laboratory Testings

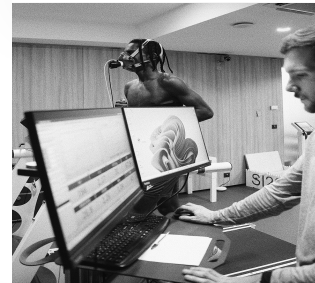
+ 4 tests

03 Posture, CORE, Flexibility, Mobility

+ 3 tests

04 Strength and Power

+ 4 tests

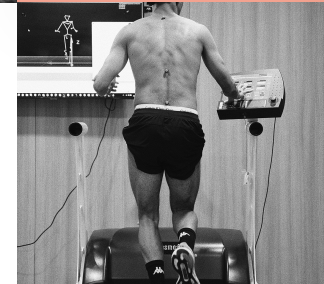


05 Resistance

+ 1 test

06 Acceleration speed complex reaction and changes of directions

+ 3 tests



07 Biomechanics and Running Technique 3D Running Analysis Qualisys

+ 2 tests

BELIEVE IN YOUR DECISIONS

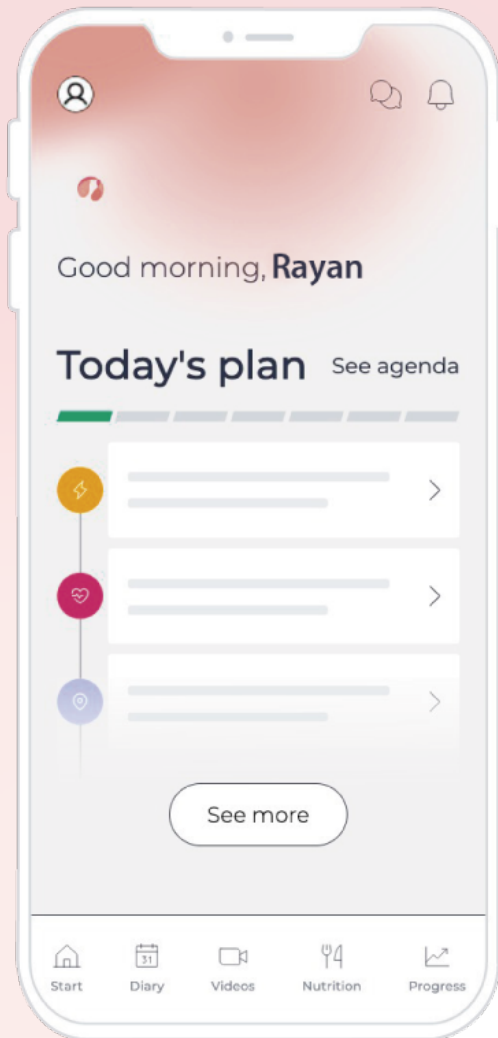
CHOOSE YOUR PROGRAM

IRISPROGRAM STARTER

PROPROGRAM ADVANCED

ELITEPROGRAM EXPERT

Forms & KYC Healthcare			
Private platform access & Secure Data			
Analysis Testings High Performance Clinic			
Programming	 Monthly & Personal	 Weekly & Personalized	 Daily & Personalized with document support review
Human Support	 Junior dedicated team	 Junior and Senior dedicated team weekly	 Senior and Doctors dedicated team daily
Personal Live Sessions	 1H per quarter for all areas	 2H per months for all areas	 4H per months for all areas & 6H specific training
Track Progress		 Personalized & Monitoring (Weekly data analysis)	 Personalized & Monitoring (daily data analysis)
Promotion & Sponsoring			



VERSTARCARE APP

Download the VerstärCare app to visualize your Program, schedule your appointments, get health-related news, and connect with your specialists team

A powerful tool that allows for even deeper management and proximity to the player, particularly in the analysis of medical data.

The VerstärCare medical app is a sophisticated tracking system, designed for the Athlete. This will allow greater integration into the process and more active adaptation.

GET A FREE ACCESS



ONBOARDING

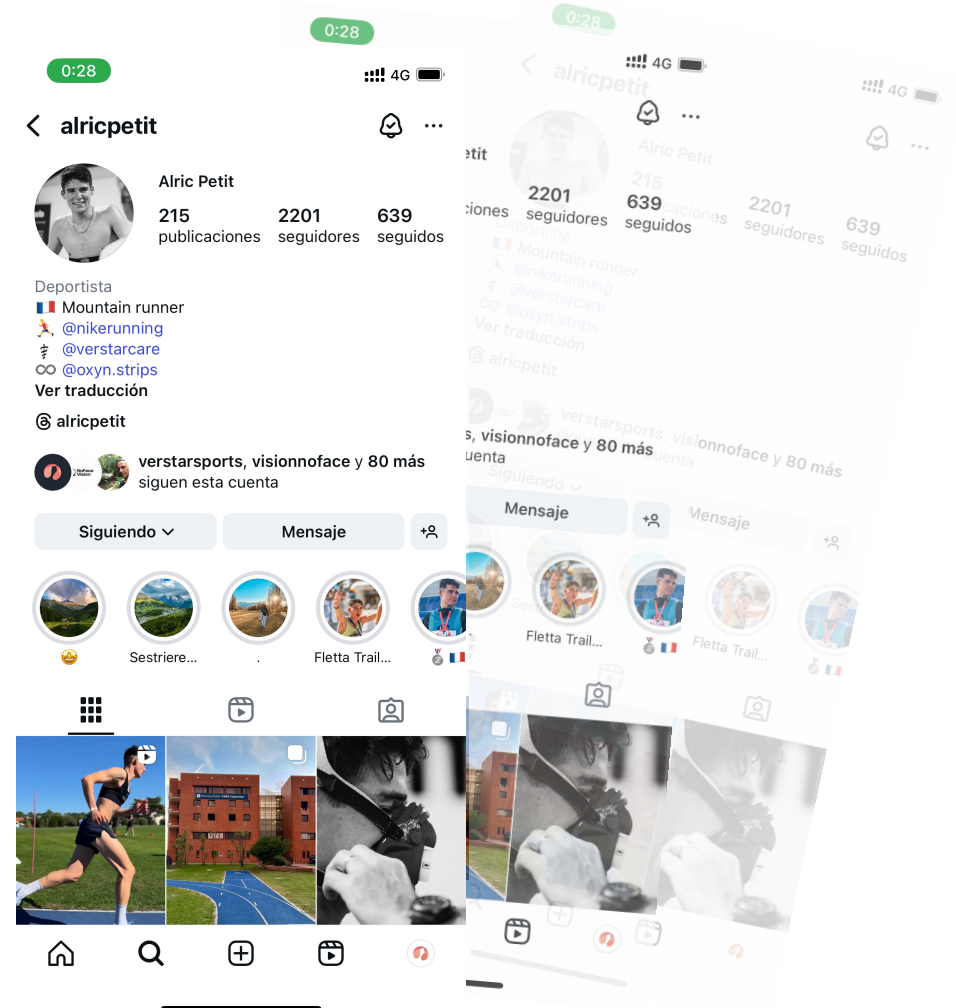
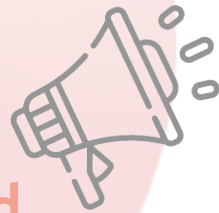
BECOME A VERSTÄR IN THE WORLD OF SPORTS

Add Us to Your Instagram Bio

IMMEDIATE 5% DISCOUNT BONUS AND
WIN PRODUCTS

Promote Your Image and Sponsoring

CONNECT WITH OUR TEAM AND TURN YOUR AUDIENCE
INTO BRAND PARTNERS





GET IN TOUCH

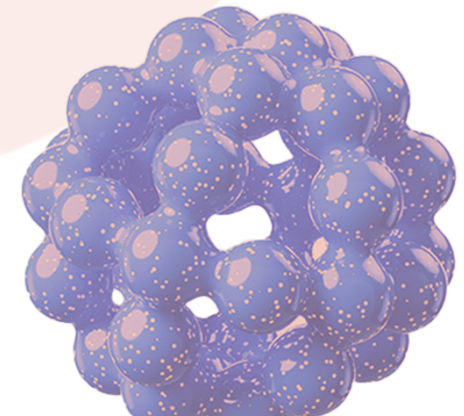
Start Today and Change The Future Of Your Sports Life. Our Professional Team is Here for You.

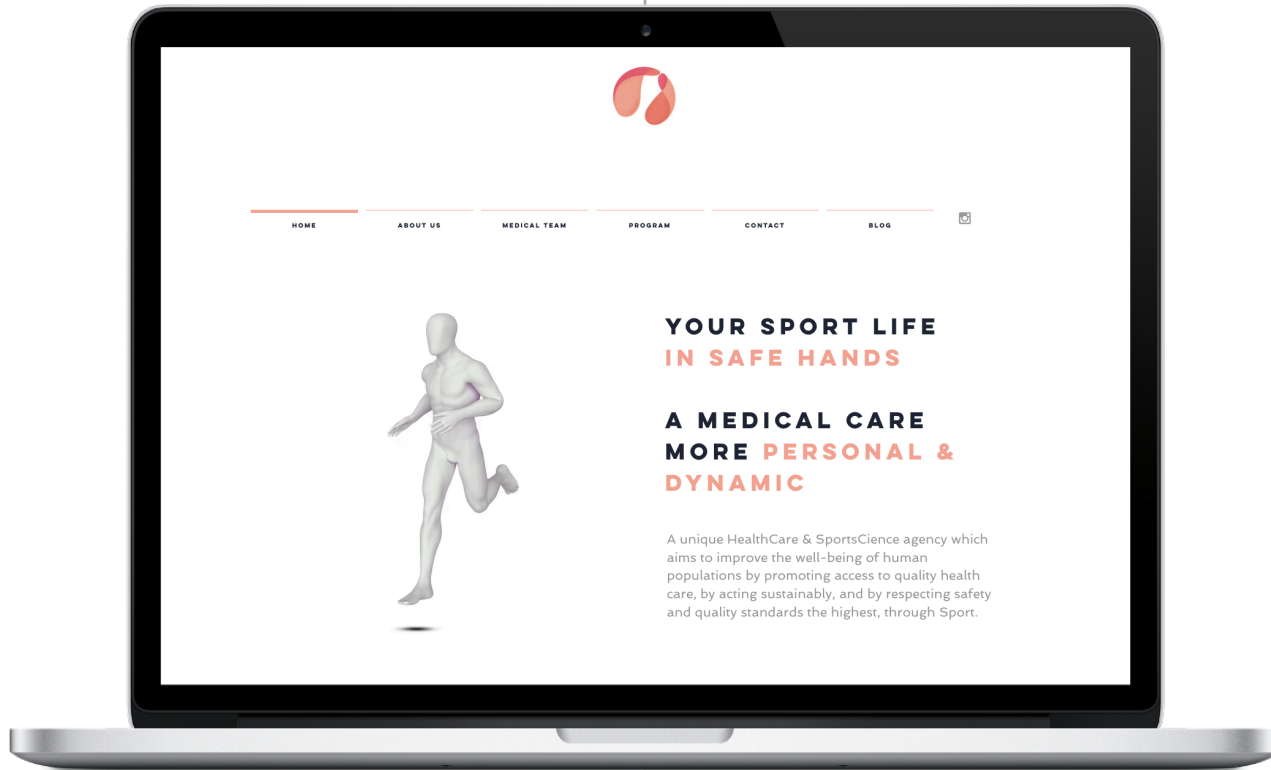


VerstärCare HQ
Santander, Spain



Contact
sales@verstarcare.com





DISCOVER MORE

Providing the Best Health Care to Our Stärs Around The World

Also join us on our website.

WWW.VERSTARCARE.COM

Nothing is gained, nothing is lost. Everything transforms



Nothing is gained, nothing is lost. Everything transforms